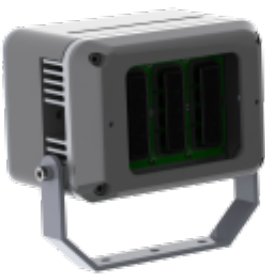


# LED UK

## HAZX Nero Mini

The HAZX Nero Mini luminaire is an explosion-proof LED floodlight which can be used in Zone 1 & 2 (Gas) and Zone 21 & 22 (Dust). The luminaire uses 12 high power LEDs with holographic lens technology to optimise light distribution in circular or elliptical outputs. The HAZX Nero Mini is constructed from marine grade aluminium with a toughen glass lens cover.

- Zone 1 & 2 (Gas) & Zone 21 & 22 (Dust)
- Atex Certified
- Holographic lens technology
- Easy installation, maintenance and inspection
- High output LEDs
- Over 50,000 hours life span



### General

Dimensions	192 x 206 x 163mm
Weight	5.0kg
Installation	Bracket Mounted
Voltage	110-254Vac 50/60Hz
Classification	Ex II 2GD emb IIC T4 / Ex tb IIIC T82°C Db
Zone	Zone 1 & 2 (Gas) Zone 21 & 22 (Dust)
Warranty	5 Years

### Performance

IP rating	IP67
Colour Rendering	Ra>80
Longevity	50,000 hours
System Power	30.0 W
Exit Lumens	2,250 lm (circular beam) 2,000 lm (elliptical beam)
Efficiency	75.0 ll/cW (circular beam) 66.7 ll/cW (elliptical beam)
Compliance	ATEX Certified

# LED UK

## HAZX Nero Mini

---

### Available options

Wattage	30W
Colour Temperature	6000K
Beam Angle	Fine (10° Beam), Narrow (30° Beam), Medium (50° Beam), Wide (120° Beam), Elliptical Fine (35° x 10° Beam), Elliptical Narrow (60° x 25° Beam), Elliptical Medium (80° x 30° Beam), Elliptical Wide (120° x 50° Beam)
Photocell	Not required, Integral Photocell
Emergency	Not required, 3 Hour Emergency
Cable Entries	M20, M25

Product Code: HAZ-NER-M