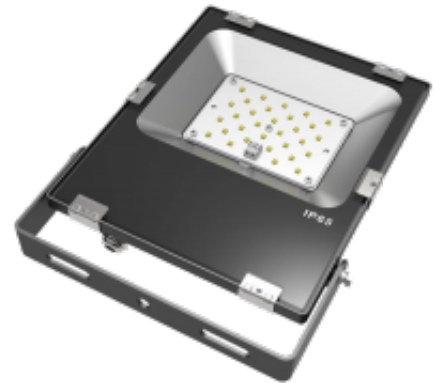


Regus 30W

The Regus 30W is constructed from an aluminium moulding with the LED chips displayed in a standard array pattern. This creates optimum passive heatsinking as air travels over the fins on the heatsink. The Regus has an IP65 rating.

- Osram LED engine
- IP65 rated
- Aluminium body
- Environmentally Friendly - No mercury or lead enters the environment
- No RF and electronic magnetic interference
- Over 50,000 hours life span
- Beam Angle 120°



General

Dimensions	167 x 266.5 x 40mm
Weight	1.8 kg
Installation	Bracket mounted
Voltage	85-277Vac 50/60Hz
Certification	CE, ROHS
Warranty	5 Years

Performance

IP Rating	IP65
Operating Temperature	-20°C - 60°C
Colour Rendering	Ra>80
Longevity	50,000 hours
System Power	31.0 W
Exit Lumens	3,913 lm
Efficiency	126.2 lm/cW
Compliance	Building Regulations ETL (Energy Technology List) ECA (Enhanced Capital Allowance) SKA Rating

Available options

Wattage	30W
Colour	3000K, 4000K, 6000K
Dimming	Fixed Output, 1-10V Dimmable, DALI Dimming

Product Code: RGS