

Tegra 295x1195

The Tegra LED panel is a bespoke modular luminaire designed to fit in to SAS130 ceilings. The body is made from powder coated steel giving a screwless appearance from under the ceiling. The diffuser is made from high efficiency PMMA which gives the luminaire optimum performance. The Tegra has a lifespan of over 50,000 hours and produces an efficacy of 123.61 lm/W.

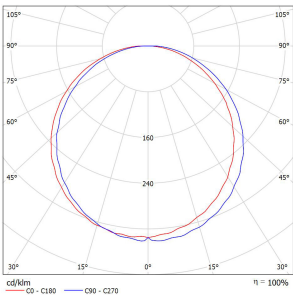
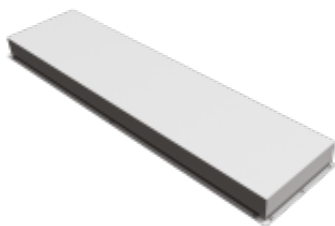
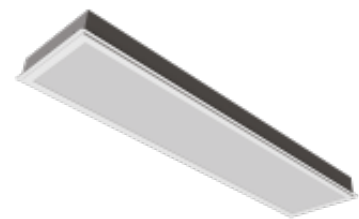
- Architectural appearance - screwless smooth bezel
- High transmittant frosted lens
- Instant on - no flicker
- Environmentally Friendly - No mercury or lead enters the environment
- No RF and electronic magnetic interference
- Over 50,000 hours life span

General

Dimensions	295 x 1195 x 85mm
Weight	15 kg
Installation	SAS130 Ceiling
Voltage	220-240Vac 50/60Hz
Warranty	5 Years

Performance

Colour Rendering	Ra>80
MacAdam Ellipse	3 Step
UGR	<19
System Power	32.1W
Exit Lumens	3968 lm
Efficiency	123.61 ll/cW
Longevity	L90 / B10 @ 50,000 hours
Compliance	Building Regulations ETL (Energy Technology List) ECA (Enhanced Capital Allowance) SKA Rating



Tegra 295x1195

Available options

Tegulation	No Tegulation, 4mm Tegulation, 8mm Tegulation, 16mm Tegulation, 20mm Tegulation
Air Handling	No Air Handling, 10 Litres per Second, 20 Litres per Second, 30 Litres per Second, 40 Litres per Second
Gearbox	Integral , Remote , Integral GST Panel Plug, Remote GST Panel Plug, Integral with Special Flying Lead, Remote with Special Flying Lead
Colour Temperature	3000K, 4000K, 5000K
Gasket	Not Required, Gasket 1 Side, Gasket 2 Side, Gasket 3 Side, Gasket 4 Side
Dimming	Fixed output, 1-10V Dimming, DALI Dimming, Switch Dimming
Emergency	Not required, 3 Hour Facility, 3 Hour Self Test, 3 Hour Central Test, Central Battery System

Product Code: TEG-3-295X1195