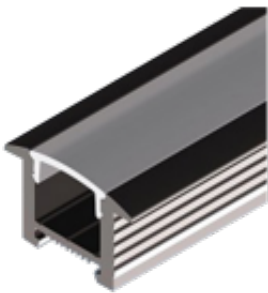


LED UK

Trimex

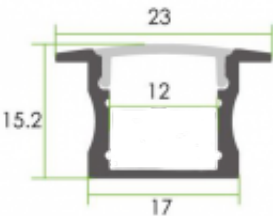
Trimex is a recessed mounted continuous extrusion luminaire available in 1000mm to 5000mm linear lengths or as prepared bespoke fitting for your project requirements. Trimex is supplied with a Opal, Frosted or Clear diffuser which makes it ideal for architectural spaces. Trimex Opal diffuser provides a dot free appearance across all wattages making the fitting suitable to be on display as an architectural feature. Trimex is available as fixed output, dimmable or colour changing RGB.

- Recessed Aluminium profile
- Opal, Frosted or Clear polycarbonate diffuser
- Instant on - no flicker
- Environmentally Friendly - No mercury or lead enters the environment
- No RF and electronic magnetic interference
- Over 50,000 hours life span
- Supplied with Remote LED Driver
- Supplied with end caps & flying lead



General

Dimensions	23.0 x 15.2 x 1000mm to 5000mm 23.0 x 15.2 x Besoke Requirement (100mm Cuts)
Weight	0.5 kg per metre
Beam Angle	120°
Installation	Recessed Mounted
Voltage	220-240Vac
Certification	CE, ROHS
Warranty	3 Years



Performance

Colour Rendering	Ra>80
Longevity	50,000 hours
System Power	5.00 W/m 10.0 W/m 15.0 W/m
Lumens	490 lm/m 950 lm/m 1350 lm/m
Compliance	Building Regulations ETL (Energy Technology List) ECA (Enhanced Capital Allowance) SKA Rating

Available options

Length	1000mm, 2000mm, 3000mm, 4000mm, Bespoke
Body Finish	Aluminium, White, Black
Colour Temperature	2700K, 3000K, 4000K, 6000K, RGB, RGBW
Diffuser	Opal, Frosted, Clear
Wattage	5W/m, 7.2W/m, 10W/m, 15W/m
Dimming	Fixed Output, 1-10V Dimming, DALI Dimmable, Mains Dimming, Switch Dimming, DMX

Product Code: TEX