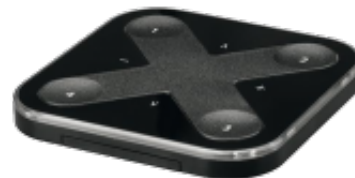


## Wireless DALI Control

---

Programmable DALI battery powered wall switch suitable for scene control.

- Individual luminaire control
- Group Control
- Control of Lamps
- Recall Scenes
- Recall Animations
- Suitable for Lighting, Heating & Ventillation

**Dimensions**

Ø90 x 90mm

**Weight**

0.2kg

**Installation**

Wall Surface Mounted

**Battery**

Lithium-ion CR 2430

**Battery**

2-5 Years (depending on usage)

**Certification**

CE, ROHS

**IP Rating**

IP20

**Product Code: WDC-DALI**