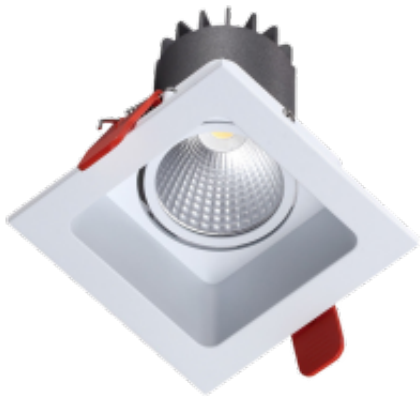


LED UK

Alta Square

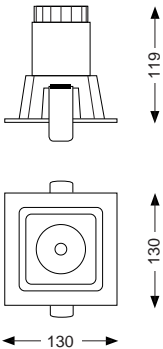
The Alta Square LED is a 130 x 130mm downlight which uses a CREE XP-E LED engine. The heatsink is constructed from die-cast aluminium complete with aluminium bezel and reflector. The bezel features a 40mm recess detail creating a glare friendly cut-off which is also an aesthetically pleasing architectural detail. The Alta Square is available in 1462lm and 2028lm outputs with a choice of beam angle and is rated IP20.

- CREE LED Engine
- Cast Aluminium
- Instant on - no flicker
- Environmentally Friendly - No mercury or lead enters the environment
- No RF and electronic magnetic interference
- Over 50,000 hours life span



General

Dimensions	130 x 130 x 119mm
Cutout	105 x 105mm
Weight	0.5kg
Installation	Ceiling Tile Plasterboard
Voltage	220-240Vac
Certification	CE, ROHS
Warranty	5 Years



Performance

Colour Rendering	Ra>82
Longevity	50,000 hours
System Power	15.0 W 20.0 W
Exit Lumens	1462lm 2028lm
Efficiency	97.46 lm/cW 101.4 lm/cW
Compliance	Building Regulations ETL (Energy Technology List) ECA (Enhanced Capital Allowance) SKA Rating

Available options

Wattage	15W - 1462lm, 20W - 2028lm
Colour	White, Special RAL Colour
Colour Temperature	3000K, 4000K, 5000K
Beam Angle	15° Beam, 24° Beam, 30° Beam, 36° Beam, 60° Beam
Lens	Clear
Dimming	Fixed Output, 1-10V Dimming, DALI Dimming, Mains Dimming, Switch Dimming
Emergency	Not required, 3 Hour Facility, 3 Hour Self Test, 3 Hour Central Test

Product Code: ALS-S-F