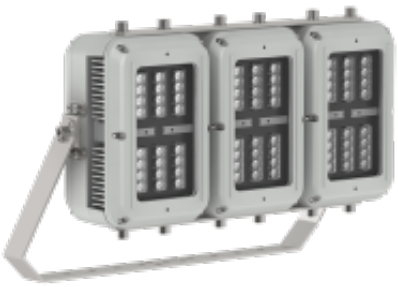


LED UK

HazX Nero Triple

The HAZX Nero Triple luminaire is an explosion-proof LED floodlight which can be used in Zone 1 & 2 (Gas) and Zone 21 & 22 (Dust). The luminaire uses three heads with holographic lens technology to optimise light distribution in circular or elliptical outputs. The HAZX Nero Triple is constructed from marine grade aluminium with a toughen glass lens cover.

- Zone 1 & 2 (Gas) & Zone 21 & 22 (Dust)
- Atex Certified
- Holographic lens technology
- Easy installation, maintenance and inspection
- High output LEDs
- Over 50,000 hours life span



General

Dimensions	562 x 367 x 156mm 562 x 367 x 217mm - Emergency
Weight	27.0kg 29.0kg - Emergency
Installation	Bracket Mounted
Voltage	110-254Vac 50/60Hz
Classification	Ex II 2GD emb IIC T4 / Ex tb IIIC T82°C Db
Zone	Zone 1 & 2 (Gas) Zone 21 & 22 (Dust)
Emergency	Up to 60 mins at 33% power Other options available
Charge Time	20 hours
Warranty	5 Years

Performance

IP rating	IP67
Colour Rendering	Ra>80
Longevity	50,000 hours
System Power	204.0 W 207.0 W - Emergency
Exit Lumens	15,000 lm (circular beam) 13,500 lm (elliptical beam)
Efficiency	73.5 ll/cW (circular beam) 66.1 ll/cW (elliptical beam)
Compliance	ATEX Certified

LED UK

HazX Nero Triple

Available options

Wattage	200W
Colour Temperature	6000K
Beam Angle	Fine (10° Beam), Narrow (30° Beam), Medium (50° Beam), Wide (120° Beam), Elliptical Fine (35° x 10° Beam), Elliptical Narrow (60° x 25° Beam), Elliptical Medium (80° x 30° Beam), Elliptical Wide (120° x 50° Beam)
Photocell	Not Required, Integral Photocell
Emergency	Not Required, 3 Hour Emergency (Single Head), 3 Hour Emergency (Twin Head)
Cable Entries	M20 , M25

Product Code: HAZ-NER-T