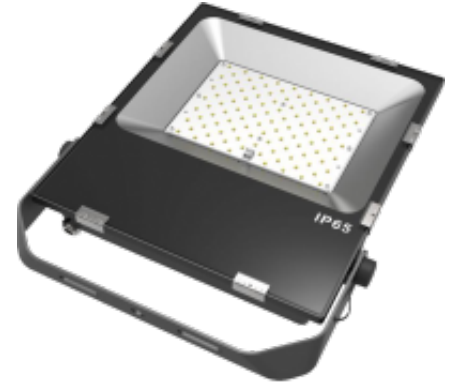


Regus 100W

The Regus 100W is constructed from an aluminium moulding with the LED chips displayed in a standard array pattern. This creates optimum passive heatsinking as air travels over the fins on the heatsink. The Regus has an IP65 rating.

- Osram LED engine
- IP65 rated
- Aluminium body
- Environmentally Friendly - No mercury or lead enters the environment
- No RF and electronic magnetic interference
- Over 50,000 hours life span
- Beam Angle 120°



General

| | |
|----------------------|--------------------|
| Dimensions | 295 x 403.5 x 60mm |
| Weight | 5.8 kg |
| Installation | Bracket mounted |
| Voltage | 85-277Vac 50/60Hz |
| Certification | CE, ROHS |
| Warranty | 5 Years |

Performance

| | |
|------------------------------|--|
| IP Rating | IP65 |
| Operating Temperature | -20°C - 60°C |
| Colour Rendering | Ra>80 |
| Longevity | 50,000 hours |
| System Power | 103.4 W |
| Exit Lumens | 13,002 lm |
| Efficiency | 125.7 lm/cW |
| Compliance | Building Regulations ETL (Energy Technology List) ECA (Enhanced Capital Allowance) SKA Rating |

Available options

| | |
|----------------|--|
| Wattage | 100W |
| Colour | 3000K, 4000K, 6000K |
| Dimming | Fixed Output, 1-10V Dimmable, DALI Dimming |

Product Code: RGS